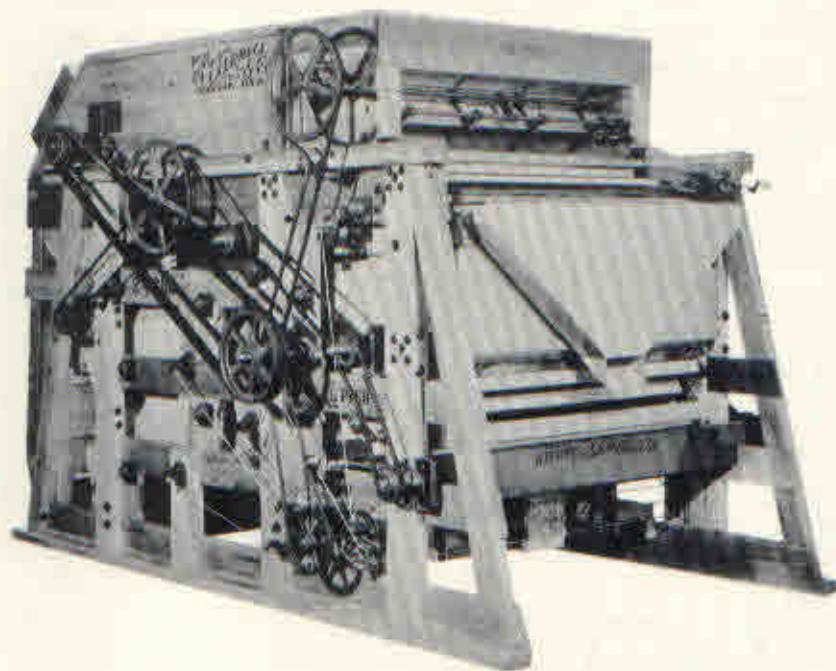


The Clipper SUPER 248-DH

DOUBLE CAPACITY SEED GRAIN - SEED BEAN CLEANER IN A COMPACT FRAME



Cleans seed grain and seed beans at capacities ranging from 600 to 1200 bushels per hour. This is accomplished by mounting two sets of screens (one above the other) in a single frame and splitting the flow evenly to each shoe.

FLOW DESCRIPTION

- The commodity discharges from the feed hopper in a uniform layer across the full width of the scalper screen, passing through an air leg which removes dust, pieces of pod, hulls and other light chaffy material.
- The commodity passes through the scalper screen which removes long straws and large bulky trash which might clog the splitter. The flow is then divided with one half routed to the upper shoe and the other half to the lower shoe.
- Each shoe carries a two piece top screen 54" x 60" which scalps off large trash and a three piece bottom screen 54" x 86" which sifts out dirt, splits, broken or under-sized kernels and other small trash. The bottom screens may combine sections with different perforations to sift out trash of varying shapes. For example: seed wheat — one section No. 12 triangle with two sections 5½/64 x ¾ makes a screen capable of sifting out both thin kernels and wild buckwheat.
- The streams of good commodity which pass over the two lower screens are rejoined and subjected to a second accurate air separation before being discharged.

OPTIONAL FLOW — supplied as standard equipment

At times it may be necessary to clean alternate loads of two different commodities which require different screen sizes. The upper shoe can be dressed with screens for one commodity and the lower shoe for another, routing the entire flow to either one. This eliminates changing screens between lots. The capacity is reduced to the level which one shoe can handle.

Double capacity — both shoes — insert divider pan and open directional valve.

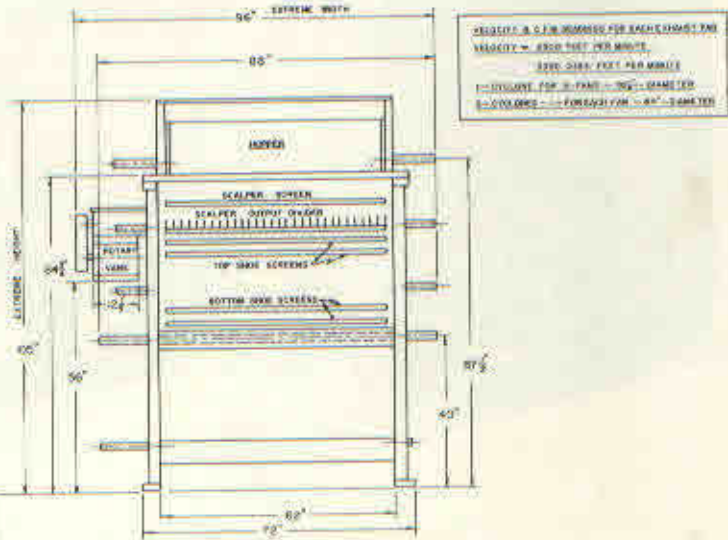
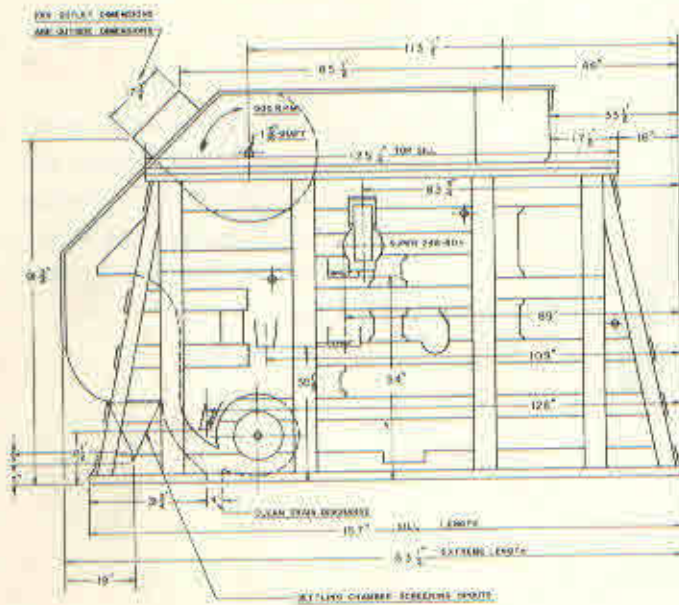
Single capacity — top shoe only — remove divider pan and open directional valve.

Single capacity — bottom shoe only — remove divider pan and close directional valve.

The Clipper SUPER 248-BDH

SUPER 248 DHCC — equipped with clay crushing rolls. Beans grown in a heavy clay soil usually contain pieces of clay so similar in size to the beans that they cannot be screened out and so heavy they cannot be removed with air. A pair of clay crushing rolls can be mounted above each shoe and passing the beans through these rolls breaks up and reduces the size of the pieces so they can be sifted out. Clay crushing rolls must be supplied as part of the original equipment — they cannot be added to a cleaner in the field.

SUPER 248-BDH — equipped with bottom blast fan. When cleaning beans containing a high percentage of splits and heavily contaminated grain at maximum capacity, the bottom screens may become overloaded and unable to do a thorough job. The remaining splits and lightweight trash must be removed with the back air. A variable speed bottom blast fan provides a more accurate air separation than standard back suction.



Standard equipment includes:

1. Customer's choice of feed hopper — includes two sets of hopper drive gears.
2. Variable speed screen shake.
3. One complete set of screens:
 - a) one 54" x 34" scalper screen
 - b) two 2-piece 54" x 60" top screens
 - c) two 3-piece 54" x 86" bottom screens
4. No. 80 Double Roller Chain Brush Drive.

Specifications — Capacities

Capacities (stated in bushels) are for thorough cleaning using medium-sized top screens. Capacity can be increased by using larger sized screen openings.

Flax	300	Wheat	1000
Oats	450	Soybeans	1000
Pea Beans	600		

SUPER 248-BDH

Note: larger size of Super 248-BDH in specifications below.

Model Number	248-DH	248-DHCC	248-BDH	248-BDHCC
Scalper Screen (in.)	54 x 34	54 x 34	54 x 34	54 x 34
Main Screen (in.)	54 x 60	54 x 60	54 x 60	54 x 60
Seed Screen (in.)	54 x 86	54 x 86	54 x 86	54 x 86
Overall Height (in.)	91	98	105	110½
Overall Width (in.)	89	89	89	88¾
Width on Floor (in.)	71	71	71	72
Width Between Sills (in.)	62	62	62	62
*Overall Length (in.)	131	131	163½	163
Height to Drive Sheave (in.)	74	79		94½
Hgt. Where Grain Enters (in.)	91	98	87½	110½
Drive Shaft Speed (r.p.m.)	900	900	900	900
Required H.P.	10	10	15	15
Approx. Shipping Wts. (lbs. crated)	4700	5000	5400	5700

*If motor mounts on back add 22 inches to length given.