

The CLIPPER *Super X*

29-D Series

Ultra Precision Seed Cleaners

This extraordinary new concept is supplied in the following models:

- 4 screen X29-D and X 298-D
- 6 screen X 2969-D and X 2968-D

This "years ahead" design offers the Seed Trade a vital major improvement that could only have been made by A. T. Ferrell and Company; namely, a more efficient precision seed cleaner than the world famous Clipper Super 29-D, which until the advent of this X machine has never been equalled by any other make or model.

The Super X 29-D is not new to our engineers — in fact, the machine is a result of several years of research and tests. For final proof, split runs were made over the pilot models and Super 29-D's for accurate comparative performance.

ACHIEVEMENTS OF THE SUPER X LINE

AIR IMPROVEMENTS

- .. The Clipper Bottom Blast Fan fully illustrated and functionally described on page 2, **an A. T. Ferrell & Company first**, recognized for many years as the ultimate in final air separation principle **HAS BEEN VASTLY IMPROVED**.

This newly redesigned feature incorporates a funnel shaped inlet which receives its maximum volume with absolutely no restrictions to impede the free flow of air.

The entire Bottom Blast air passage has been scientifically shaped to further improve the "free flow" factor.

The settling chamber is now greater in size, increasing former efficiency permitting extra profits because of its ability to select the salvageable seed from foreign materials, thus holding seed loss to a minimum. It is equipped with an auger which reports the trash to the side of the cleaner for convenient disposition.

Its applied velocity can be quickly trimmed to the most discriminating degree for ultra selectivity.

- .. Much wider range of air adjustments.

- .. Complete air control including a new type booster valve which allows precise dampening yet maintains minimum velocity through exhaust ducting required to keep pipes to dust collector from plugging.

- .. Increased selectivity of air for positive air separations.

- .. Even air distribution throughout the Super X never before attained by any other make or model.

SCREEN SYSTEM

- .. Bottom screen in each shoe offset-positioned to allow full travel of seed.

- .. Larger diameter (1 3/16") Brush Carrier rod giving better support and positive brush contact.

- .. New style brush adjusting mechanism — **positive action — no clogging**, grain cannot lodge and jam mechanism.

CONSTRUCTION

- .. Reinforced rigid frame supports incorporated for greater cleaner stability.

- .. Settling chamber auger routes trash to side of cleaner for convenient spouting.

Well Known Regular Clipper Features Include:

1. Two large Top Suction Fans which quickly remove light weight trash.
2. Variable Shoe Shake for the desired shoe vibrations per minute — completely, quickly adjustable over a wide range of speeds — adjusted to the proper shake for each commodity.
3. Adjustable-Pitch Screens — permit exact pitch adjustment

for the proper travel of every type of seed.

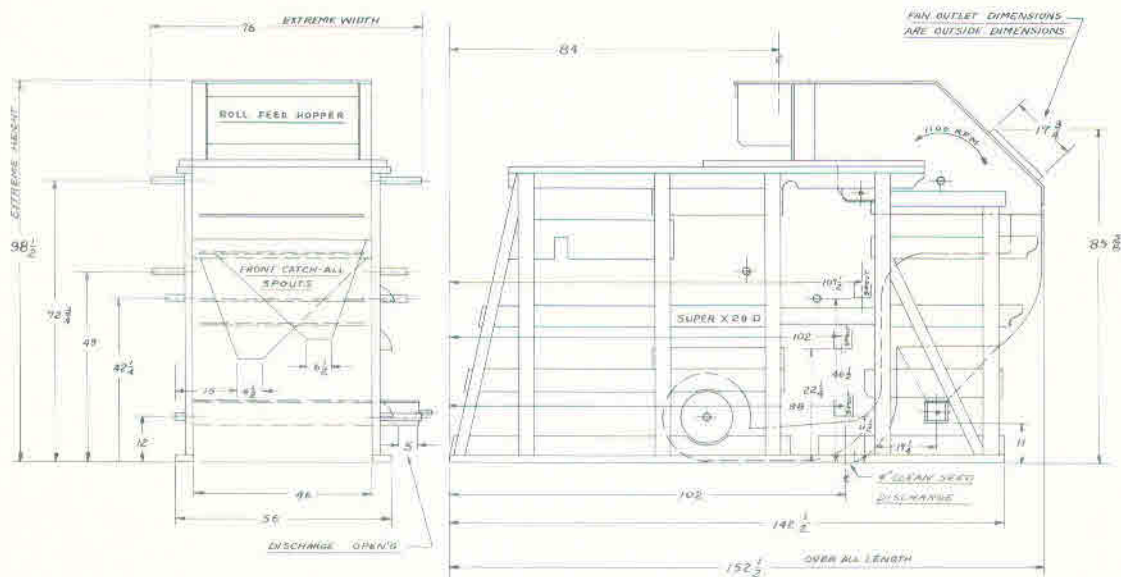
4. Variable Air Regulator — The precision designed assembly which makes fast, accurate Bottom Blast Fan adjustment to supply exactly the right amount of air for the particular job.
5. Continuous-Traveling Screen Brushes — double set under each screen to keep perforations clean assuring peak screen efficiency. Powered by the dependable GS-53 Brush Drive.

Example of Cleaning using the 4 screen Super X-29D

The hopper (special purpose hoppers available) feeds the seed steadily through the hopper top suction air leg and evenly distributes it across the 42" width of the top screen. The suction removes light trash while sticks, stems, leaves, etc. are scalped off by the screen.

The good seed drops through the first screen onto the second screen which is selected to hold up the good seed and drop everything smaller. The contents of the screen is routed to the top screen of the lower shoe which usually will be selected of a size to do a second (closer) scalping job. The good seed falls through to a

final or finishing screen which drops everything smaller than the stock and finally delivers the crop seed to final discharge through the Bottom Blast Fan column of air. This air separation adjustment is fortified and maintained by both the Bottom Blast Fan and one of the two top suction fans. The velocity adjustment is extremely sensitive and capable of making precise air separations of the cleaned seed by weight. The cleaned seed discharges across the full width of the cleaner from a 4 inch wide opening under the cleaner. Any remaining dust is blown to the collector dust house while the heavier foreign material is lifted into two settling chambers.



As is true with the Super 29-D the screens can be quickly set up as three tops and one finishing screen by re-arranging special catch-all spouts furnished.

Unless otherwise specified, the Super X is supplied with a Roll Feed Hopper. Several other hoppers are available as shown and described on page 4.

Extras Available at Additional Cost:

The newly engineered **metering hopper**, especially designed to handle the most trashy grasses, is now available used with the variable hopper drive.

Screen knockers available for top screens can be supplied upon request.

For seedsmen who are interested in running grasses and small light weight seeds **only** a special set of drive sheaves and belts are available. Speed can be cut to as low as 550 r.p.m. By owning two sets of sheaves and belts this machine will clean either small or large seeds — the transition from one pulley-belt combination takes but a couple of minutes.

Sturdy Guards are Available for any or all Drives

Two rubber rolls for crushing clay lumps in beans or one steel and one rubber roll for crushing wild onions can be factory installed if desired.

The fan discharge angle is fixed at 45° to the rear as shown.

1. To run ducting vertically use one 45° elbow segment.
2. To run ducting at 45° angle toward front use two 45° elbow segments.

SPECIFICATIONS - CAPACITIES

Model Number	Super X 29-D	X 298-D	X 2969-D	X 2968-D
Screen Size (inches)	42x60	54x60	42x60	54x60
Bu. Per Hr.—Seeds	65-90	85-110	65-90	85-110
Bu. per Hr.—Seed Grain	110-165	150-225	110-165	150-225
Bu. per Hr.—Beans	225-325	275-450	225-325	275-450
No. of Screens in Cleaner	4	4	6	6
No. of Screens Furnished	12	12	12	12
Extreme Height (inches)	98 1/2	98 1/2	115	115
Extreme Length (inches)	152 1/2	152 1/2	152 1/2	152 1/2
Extreme Width (inches)	76	88	76	88
Length on Floor (inches)	142 1/2	142 1/2	142 1/2	142 1/2
Width on Floor (inches)	56	68	56	68
Width Between Sills (inches)	46	58	46	58
Height to Where Grain Enters (inches)	98 1/2	98 1/2	115	115
Height to Drive Shaft (inches)	72 3/4	72 3/4	89 1/2	89 1/2
Drive Shaft Speed (r.p.m.)	1100	1100	1100	1100
Horsepower Required	7 1/2	10	7 1/2	10
Shipping Weight (lbs.)	3800	4300	4700	5000

Drive shaft diameter of each of these models is 1 15/16 inches.