

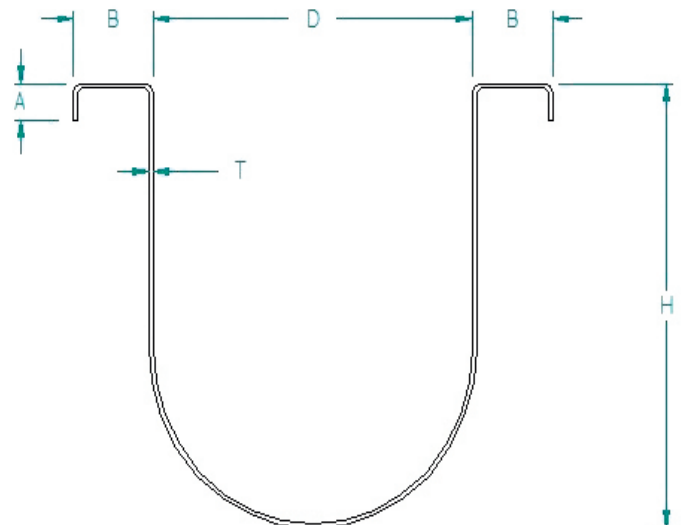
# U-Trough

## SPECIFICATIONS

Trough Size	5"				6"			8"			10"			11"			13"		
Screw Size	4"	5"	5"	5"	7"	7"	7"	9"	9"	9"	10"	10"	10"	12"	12"	12"			
BPH	230	500	750	1000	1200	1500	1800	2000	2500	3000	2666	3377	4088	3000	4000	5000			
Load Rate	60	80	80	80	80	80	80	80	80	80	80	80	80	60	60	60			
R.P.M.	195	200	250	300	200	250	300	200	250	300	150	200	250	150	200	250			
Horsepower required for length.	8'	.75hp.	1hp.	1hp.	1hp.	1hp.	1hp.	1.5hp.	2hp.	2hp.	2hp.	3hp.	3hp.	3hp.	3hp.	3hp.			
	16'	.75hp.	1hp.	1hp.	1.5hp.	1hp.	1.5hp.	1.5hp.	2hp.	2hp.	3hp.	2hp.	3hp.	3hp.	3hp.	3hp.			
	24'	.75hp.	1hp.	1.5hp.	1.5hp.	1.5hp.	1.5hp.	2hp.	2hp.	3hp.	3hp.	3hp.	5hp.	5hp.	5hp.	7.5hp.			
	32'	.75hp.	1.5hp.	1.5hp.	2hp.	2hp.	2hp.	2hp.	3hp.	3hp.	5hp.	3hp.	5hp.	5hp.	5hp.	5hp.			
	40'	1hp.	1.5hp.	2hp.	3hp.	2hp.	3hp.	3hp.	3hp.	5hp.	5hp.	5hp.	7.5hp.	7.5hp.	7.5hp.	7.5hp.			
	48'	1hp.	1.5hp.	2hp.	3hp.	3hp.	3hp.	5hp.	5hp.	5hp.	7.5hp.	5hp.	7.5hp.	7.5hp.	5hp.	7.5hp.			
	56'	1hp.	1.5hp.	2hp.	3hp.	3hp.	5hp.	5hp.	5hp.	7.5hp.	7.5hp.	5hp.	7.5hp.	7.5hp.	7.5hp.	7.5hp.			
	64'	1hp.	2hp.	3hp.	3hp.	3hp.	5hp.	5hp.	5hp.	7.5hp.	7.5hp.	7.5hp.	10hp.	10hp.	10hp.	10hp.			
	72'	1hp.	2hp.	3hp.	3hp.	5hp.	5hp.	5hp.	7.5hp.	7.5hp.	10hp.	7.5hp.	10hp.	10hp.	7.5hp.	10hp.			
	80'	2hp.	2hp.	3hp.	3hp.	5hp.	5hp.	5hp.	7.5hp.	7.5hp.	10hp.	10hp.	15hp.	15hp.	15hp.	15hp.			
	88'	2hp.	3hp.	3hp.	5hp.	5hp.	7.5hp.	7.5hp.	7.5hp.	10hp.	10hp.	10hp.	10hp.	15hp.	15hp.	15hp.			
96'	2hp.	3hp.	3hp.	5hp.	5hp.	7.5hp.	7.5hp.	10hp.	10hp.	15hp.	10hp.	15hp.	15hp.	10hp.	15hp.				

## SPECIFICATIONS

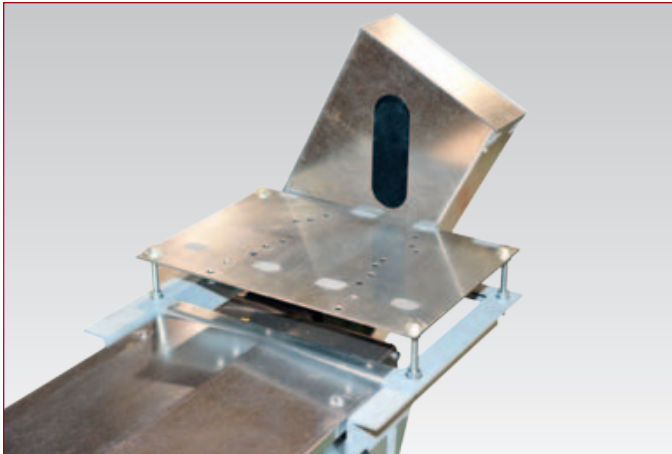
Trough Size	5"	6"	8"	10"	11"	13"
Screw Outside Diameter	4"	5-1/8"	7"	9"	10"	12"
Flighting Gauge	12 Ga.	10 Ga.	7 Ga.	7 Ga.	7 Ga.	1/4"
Pipe O.D. Size	1.3125"	1.5"	1.5"	1.9"	1.9"	3"
Coupler Shaft	1-1/16"	1-1/4"	1-1/4"	1-1/2"	1-1/2"	2"
Bearing Size	1-1/16"	1-1/4"	1-1/4"	1-1/2"	1-1/2"	2"
(A) Flange Height	1/2"	5/8"	5/8"	5/8"	5/8"	3/4"
(B) Flange Width	1-1/2"	1-1/2"	1-1/2"	1-3/4"	1-3/4"	2-1/4"
(D) Inside Width	5-1/8"	6"	8"	10"	11"	13"
(H) Height	6-9/16"	7-5/8"	9-7/8"	12"	12-1/8"	14-11/32"
(T) Thickness	14 Ga.	14 Ga.	12 Ga.	12 Ga.	12 Ga.	12 Ga.



# U-Trough



U-Trough constructed from heavy gauge galvanized steel with formed flange and bottom U shape.



Overhead motor mount for easy access and 4-Bolt adjustment for optimum tension and alignment.



Fabricated hanger bearings use oil-impregnated wood inserts for easy installation and minimum maintenance.

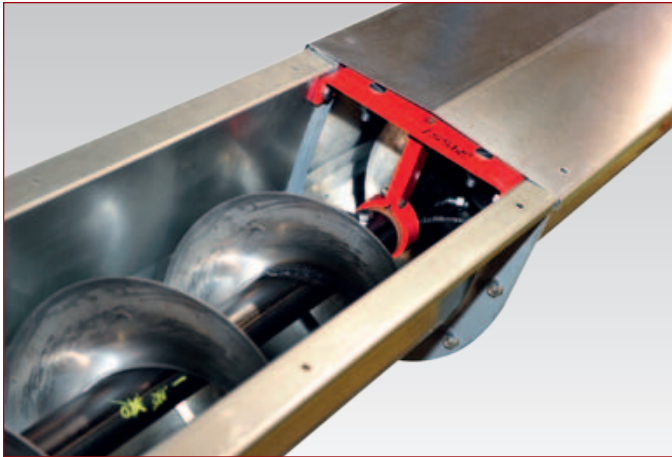
# U-Trough



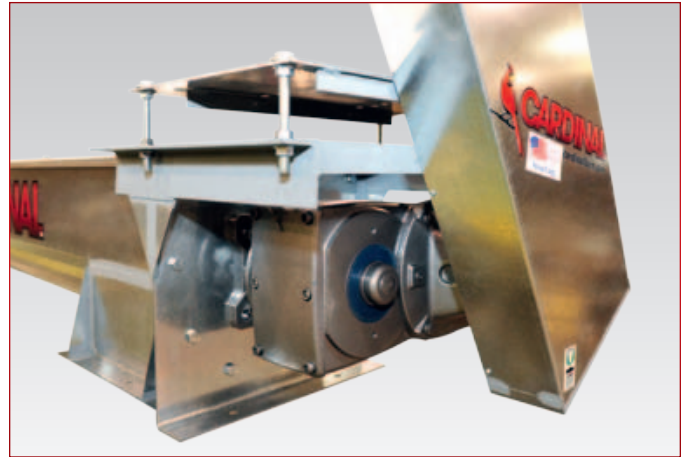
Custom lengths available for Standard and Discharge U-Trough in 2' increments.



U-Trough Cover & Caps available in increments of 2'.



U-Trough screw precision welded, aligned and tested to minimize vibrations and maximize true auger rotation



Robust Nord Gear Drive Speed Reducer available.

Additional accessories are available, such as Inlet Hopper, Drop Hopper, Rope-Pulley Slide Gate, Square to Round Adapters, and Bucket Elevator Hookup Plates.