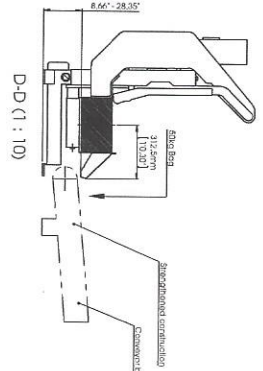
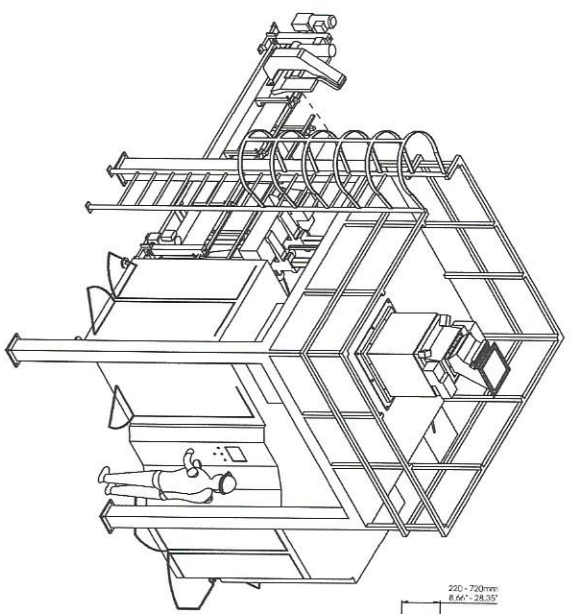
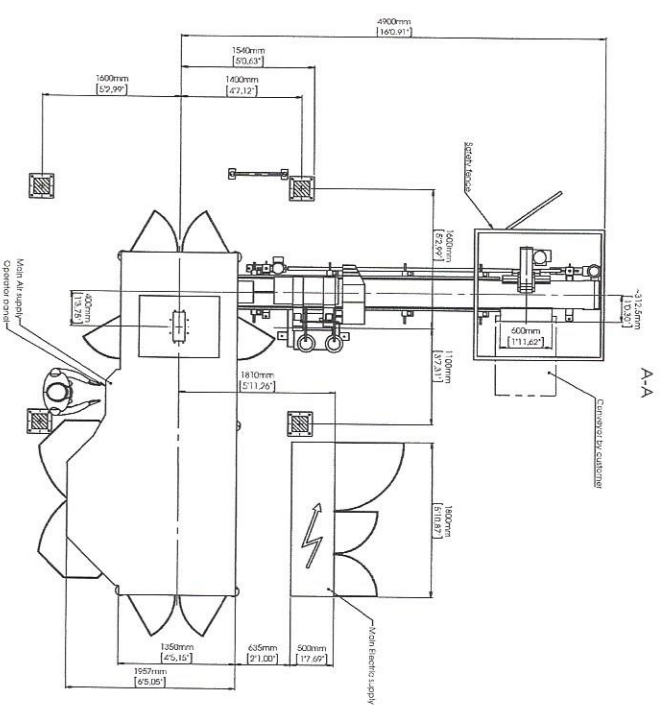
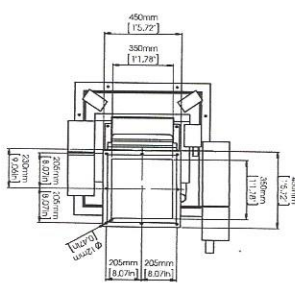


C-C
H=5056mm (167.06')
(1:10)



D-D (1:10)

SPECIFICATION - BAGGING

ITEM NO.	DESCRIPTION	UNIT	QUANTITY
1	GRANULATION	TON	100
2	BLUR (CHRYSTAL)	TON	100
3	COAGULATION	TON	100
4	FRONT PANEL SIZE	CM	100

APPROVAL	DATE
APPROVED	
APPROVED/ASIGNED	
NOT APPROVED	

General Arrangement Drawing

STATEC BINDER

PROJECT NO. ZP1.11103

DATE: 10/10

SCALE: 1:10

PROJECT: STATEC BINDER

DESIGNER: STATEC BINDER

CHECKER: STATEC BINDER

APPROVER: STATEC BINDER