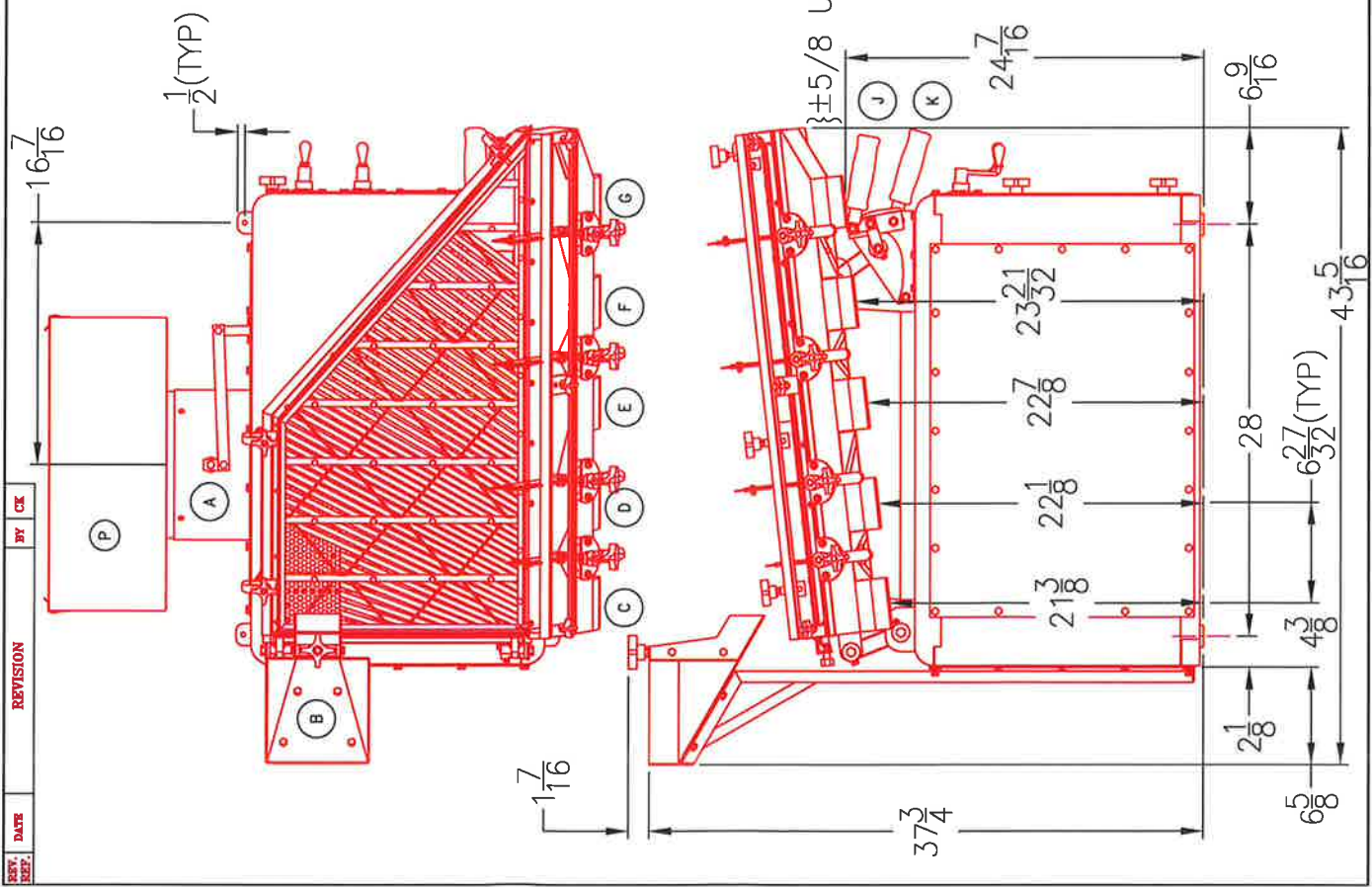


REV.	DATE	REVISION	BY	CHK
------	------	----------	----	-----

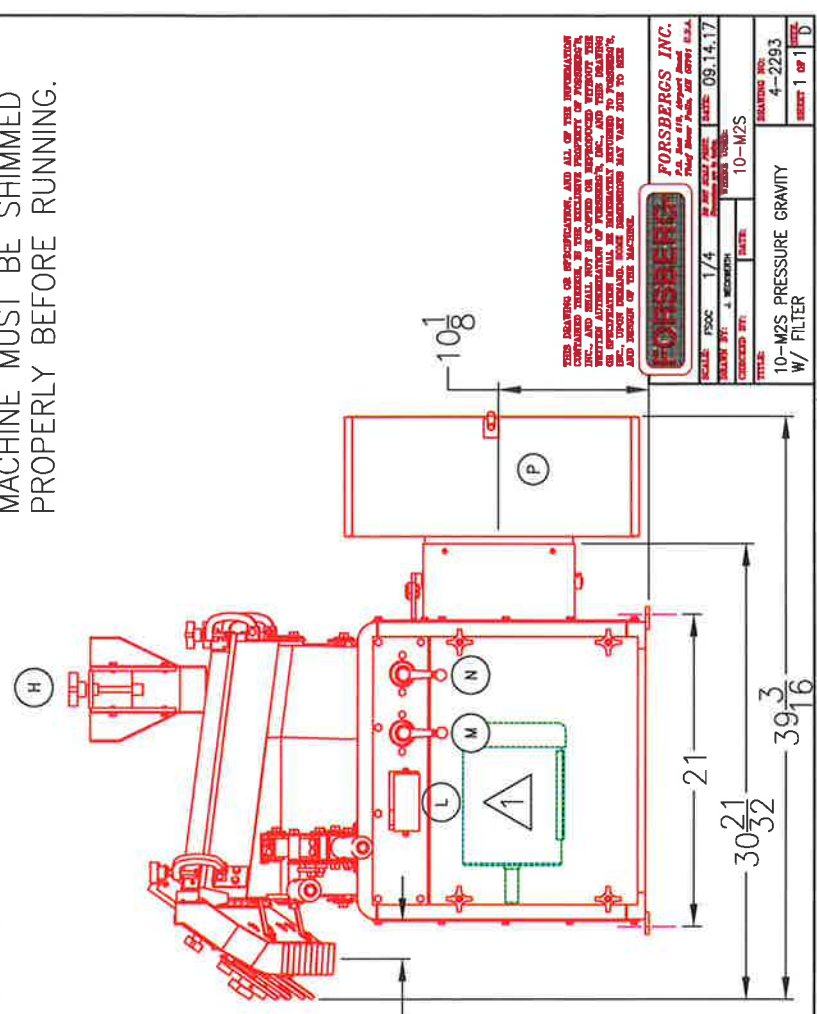


- (A) AIR INTAKE $\phi 10"$
- (B) FEED INLET $7" \times 7"$
- (C) LIGHT MATERIAL DISCHARGE $3-1/2 \times 2$
- (D) INTERMEDIATE DISCHARGE $3-1/2 \times 2$
- (E) INTERMEDIATE DISCHARGE $3-1/2 \times 2$
- (F) INTERMEDIATE DISCHARGE $3-1/2 \times 2$
- (G) HEAVY DISCHARGE $3-1/2 \times 2$
- (H) FEED CONTROL
- (J) PITCH CONTROL
- (K) ELEVATION CONTROL
- (L) TACHOMETER
- (M) SPEED CONTROL
- (N) AIR CONTROL
- (P) FILTER UNIT

1 H.P. MOTOR - 1725 R.P.M.
 PROVIDE FLEXIBLE CONNECTION

NOTE:
 MAKE ALL RECEIVING SPOUTS
 1" LARGER ALL AROUND.
 MACHINE MUST BE SHIMMED
 PROPERLY BEFORE RUNNING.

CAUTION
 THIS IS A VIBRATING MACHINE. A SUITABLE CONCRETE
 BASE OR A SUBSTANTIAL FLOOR MUST BE USED. FLOORS
 MUST BE OF SOLID CONCRETE OR A SOLID STRUCTURAL
 BASE. IF NOT, FLOORS WILL ABSORB AND TRANSMIT
 VIBRATIONS THROUGHOUT THE BUILDING.



THIS DRAWING OR SPECIFICATION, AND ALL OF THE INFORMATION
 HEREON, IS THE PROPERTY OF FORSBERG'S, INC. AND SHALL NOT BE
 REPRODUCED OR TRANSMITTED IN ANY MANNER WITHOUT THE
 WRITTEN AUTHORIZATION OF FORSBERG'S, INC. AND THE DESIGN
 ENGINEER. UNLESS OTHERWISE SPECIFIED, DIMENSIONS ARE IN
 INCHES AND DECIMALS THEREOF. DIMENSIONS MAY VARY DUE TO
 MANUFACTURING TOLERANCES.

FORSBERG'S			
SCALE	1/4"	AS SHOWN	DATE
DESIGNED BY	J. W. WOOD	DATE	10-1-52
FORSBERG'S, INC. 10-M2S PRESSURE GRAVITY W/ FILTER			
REV.	DATE	BY	CHK
4-2293			
1 OF 1			